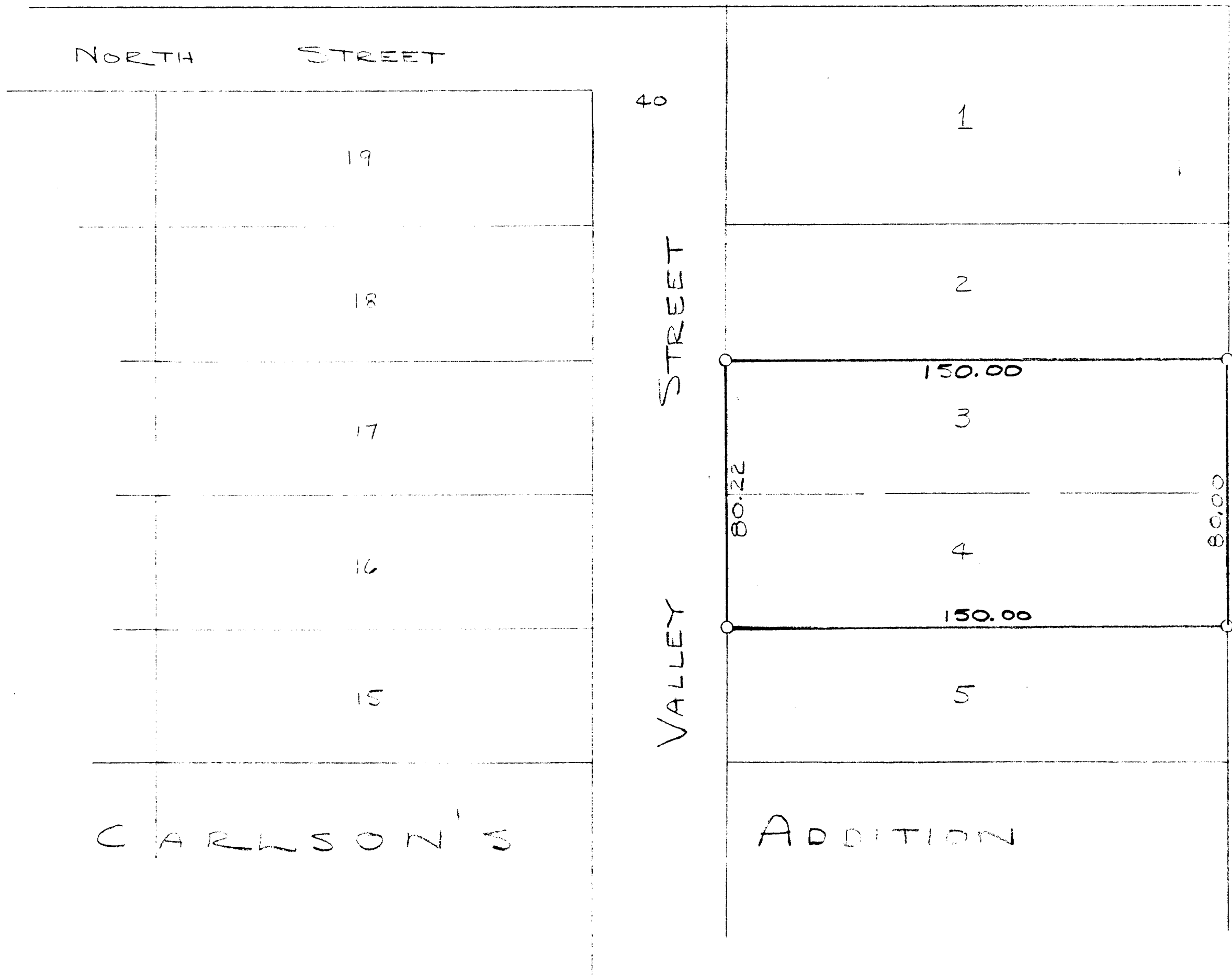
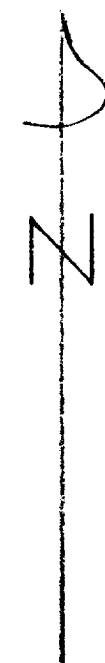


UNPLATTED



UNPLATTED



SCALE 1" = 30'
O = IRON PIPE

WCA-2

PLAT OF SURVEY OF LOTS 3 & 4 OF CARLSON'S
ADDITION TO THE VILLAGE OF WILLIAMS BAY,
WALWORTH COUNTY, WISCONSIN

OCT. 1950

Lloyd L. Jensen
COUNTY SURVEYOR

11-88J